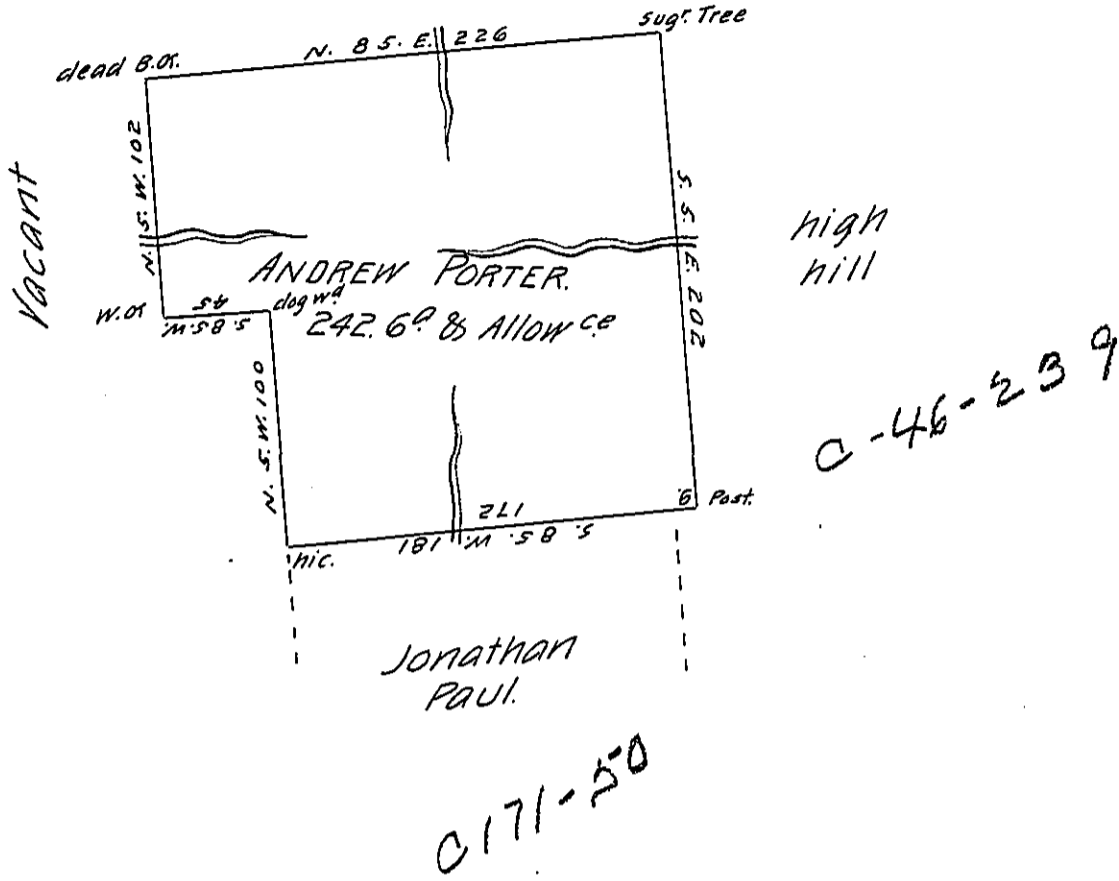


A-63 170

Land



Survey'd to Andrew Porter on the 24<sup>th</sup> Day of June 1776. The above Described Tract of Two hundred forty two Acres & an half of an. Acre & Allowance of six  $\frac{1}{2}$  Ct Situate on the South Side of Black Lick Creek opposite William William Bra- ken's Mill in Westmorland County. By Warrant of the 2<sup>d</sup> Day of November 1773.

$\frac{1}{2}$  Joshua Elder, D.S.

To John Lukens, Esqr. S. Genl

IN TESTIMONY that the above is a copy of the original remaining on file in the Department of Internal Affairs of Pennsylvania, made conformably to an Act of Assembly approved the 16th day of February, 1833, I have hereunto set my Hand and caused the Seal of said Department to be affixed at Harrisburg, this twenty-sixth day of March 1906.

*George P. Brown*  
Secretary of Internal Affairs.